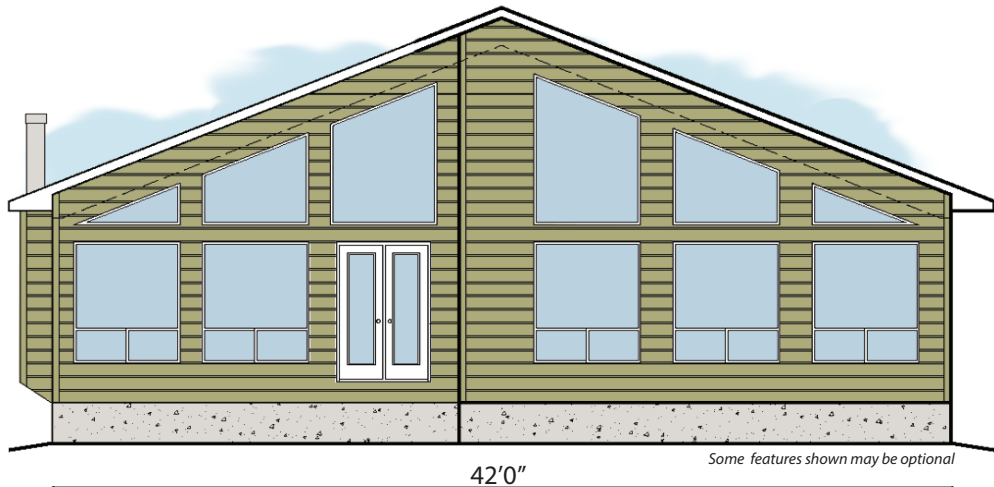


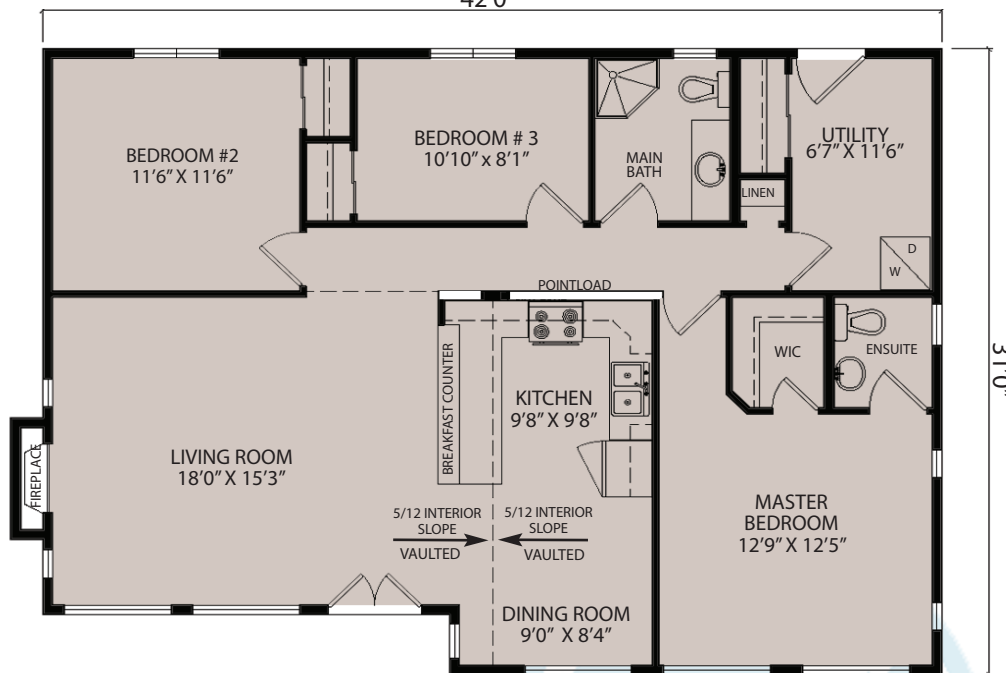


OBS 030

1245 SQ. FT.



Some features shown may be optional



**FEATURES:**

- 8'0" main floor
- I-joists
- Beam and pile foundation

(g/b = grade beam) (conc. = concrete) (cont. = continuous) (pwf = permanent wood foundation)

*Plans and specifications are subject to change without notice. All rights reserved in the copying and reproduction of these plans. All drawings meet the National Building Code and the Manitoba Building Code.*